

PLAN

NOTES: ALL REINFORCING STEEL BETWEEN BRIDGE SEAT AND/OR BACKWALL AND WINGS SHALL BE TIED IN PLACE PRIOR TO POURING BRIDGE SEAT AND BACKWALL (BV AND WT BARS).

ALL EDGES OF THE ABUTMENT AND WINGS SHALL HAVE A 3/4" CHAMFER, UNLESS OTHERWISE SHOWN.

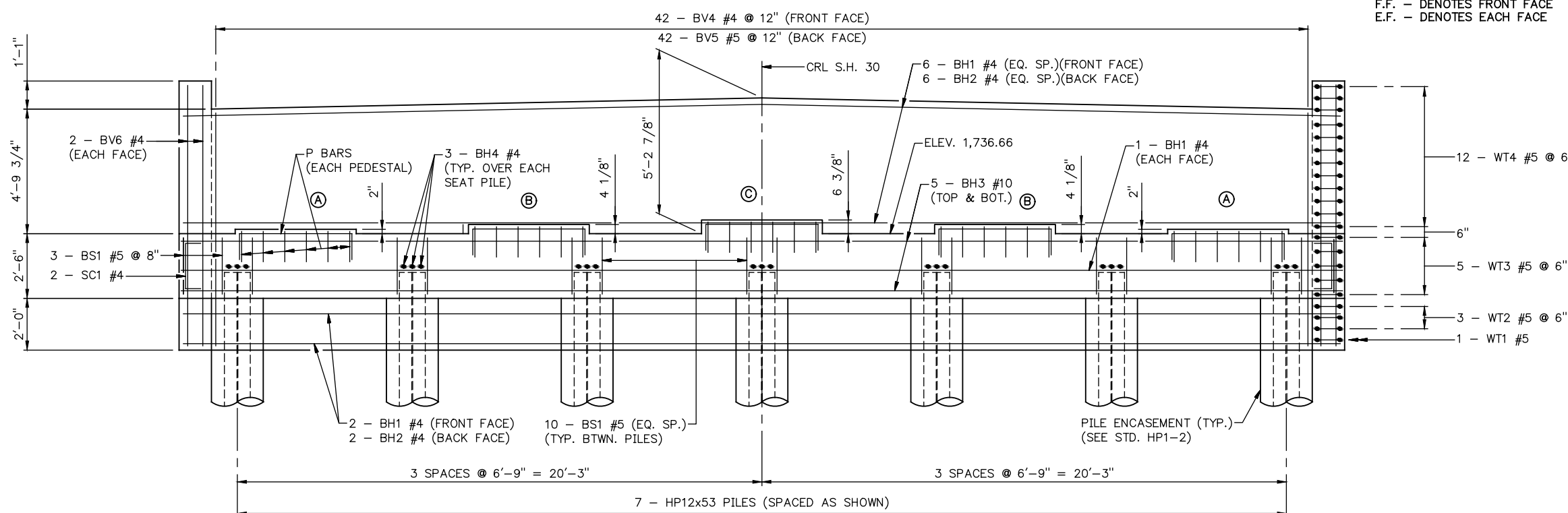
FOR WING DETAILS, BAR BENDS, BAR LISTS AND QUANTITIES, SEE SHEET NO. 43.

FOR SUBSTRUCTURE STAKING DIAGRAM, SEE SHEET NO. 39.

NOTES: TREAT FRONT FACE OF BACKWALL, TOP OF ABUTMENT SEAT, ALL SURFACES OF PEDESTALS WITH A PENETRATING WATER REPELLENT SURFACE TREATMENT.

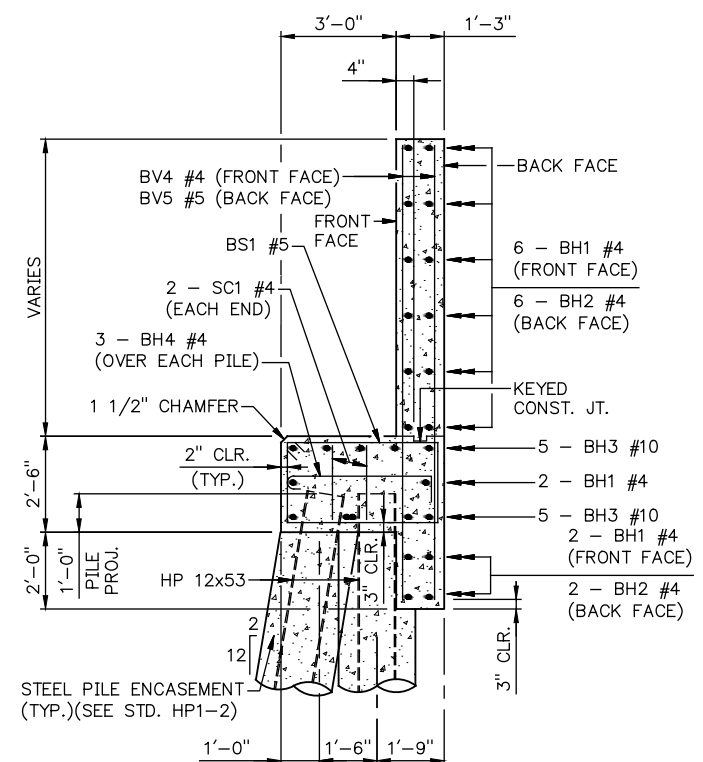
TREAT FRONT FACE OF ABUTMENT SEAT ABOVE THE FINISHED GROUND LINE WITH PENETRATING WATER REPELLENT SURFACE TREATMENT.

| SCHEDULE OF PEDESTAL ELEVATIONS | |
|---------------------------------|------------|
| PEDESTAL | ELEVATIONS |
| A | 1736.83 |
| B | 1737.01 |
| C | 1737.19 |



ELEVATION
(LOOKING UP-STATION)

NOTES:
B.F. - DENOTES BACK FACE
F.F. - DENOTES FRONT FACE
E.F. - DENOTES EACH FACE



TYPICAL SECTION THRU SEAT

ABUTMENT 2 DETAILS
(SHEET 1 OF 2)
BRIDGE "A" C.R.L. STA. 586+80.46

State Job No. 28768(04) Sheet No. 42